

The Woodfield Entertainers Present

U11

BABES in the WOOD

17, 18, 19 December 2015

Written by

Damian Trasler, David Lovesy
and Steve Clark (TLC Creative)

Directed by

Melanie Schmidt



Affiliated to the
National Operatic and

Scenes

Act 1

Prologue

Scene 1 – Nottingham Market Square

Scene 2 – The Sheriff's Private Rooms

Scene 3 – Sherwood Forest

Scene 4 – The Sheriff's Private Rooms

Scene 5 – The School Room

Scene 6 – On the edge of Sherwood Forest

Interval

Soft drinks and snacks are available from the servery throughout the interval.

The bar will only be open for evening performances.

Act 2

Prologue

Scene 1 – Deep in Sherwood Forest, morning

Scene 2 – On the edge of Sherwood Forest

Scene 3 – The Sheriff's Private Rooms

Scene 4 – The Outlaw Den

Scene 5 – The Sheriff's Private Rooms

Scene 6 – On the edge of Sherwood Forest

Scene 7 – Nottingham Square



A message from our Director Melanie Schmidt

Babes in the Wood, a pantomime I have always wanted to direct. My quandary was always having two youngsters to play the babes and would they be able to do it?!

Well, rather wonderfully, this year I have two young ones who completely fit the bill and they are just brilliant - and I'm sure you will agree!

I really enjoy being creative and it is a joy to see my vision being brought to life on stage!

I feel immensely proud of my cast and commend them highly – it can't be easy being directed by me!

I've put my all into the show and I really hope that you enjoy the fruits of all of our labours!
Merry Christmas everyone!

Cast



Robin Hood – Hannah Chapman

I must take a break from all of my dashing deeds of daring do in order to write this little piece. I've quite enjoyed the stealing from the rich to give to the poor to be honest. All whilst wearing a rather fetching pair of green tights! I do hope you enjoy our performance of Babes in the Wood and remember we perform best with plenty of audience participation so lots of noise please. It's true – oh yes it is!



Maid Marion – George Margetts

My first role as principal girl - am enjoying the glitter!! It's been a bit daunting singing my first ever solo but I hope I do it justice!

We really do love as much interaction from the audience as possible so don't forget to boo and hiss as loud as you can!





Nurse Molly Coddle – Kenny Menet-Hawkins

As my second panto with The Woodies I have been given a slightly different role with a little more involvement.

From jeans to dresses! Watch out all you lovely men!



Sheriff of Nottingham – Neil Edwards

You had better all watch out! I am feeling extremely nasty and no amount of booing and hissing is going to help you miserable bunch of peasants.



The Fairy – Cara Turner

I hope you all enjoy Cinderella! Or am I with Aladdin? No, I'm sure I'm helping Peter Pan! Oh dear...



Dangerous Dave – Tim Waters

Names Dave, Dangerous Dave...



Friar Tuck – Graham Thorburn

Text

Little John – Simon Gadd

Text

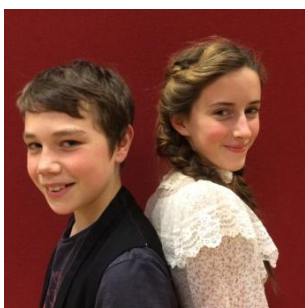


Will Scarlet – Sandra Graves

Just love playing a Chap! Having fun as always. Will

Emma Dale – Amalee Gamache

Text



Pip – Thomas Thorburn

I'm really enjoying my experience with the Woodies. My previous Drama group was all children, so this is very different. I love it!

Penny – Millie Barnes

First Woodies panto with quite a few lines, it's been a challenge but I've loved it!



Block – Elaine Denny

A hench henchman? Typecast again... Enjoy our panto all you 'nippers'!

Tackle – Jenny Gamache

I thought I'd "Tackle" a dim witted part this year – how apt!



Villagers & outlaws

Judy Abbott

Boo and hiss as loud as you can at the horrible sheriff!

Claire Webb

Being in the Woodies' pantomime each year, is a great start to seasonal cheer!



Guards

Tracey Gillard

Stage Manager and cast, exciting times!!

Daniel Shepherd

I wondered lonely as a cloud,
Joined the Woodies and now I'm proud!

Acknowledgements

Director	Mel Schmidt
Production Manager	Jenny Gamache
Catering	***
Choreography	Mel Schmidt and George Margetts
Costumes	Cara Turner and Mel Schmidt
Front of house	Sara Bramall
Lighting	Dominic Lawrence
Sound	Bruce Arnold and Alex ***
Call Girl	Alison Kiddell
Make-up	***
Music Director	Mel Schmidt
Music Editing	Bruce Arnold
Poster / Flyer Design	Sara Brammall
Programme Design	George Margetts
Prompt	Trudie Purdue
Props	Tracey Gillard and Mel Schmidt
Raffle	Sandra Graves
Scenery Painters	Cast
Scenery Transport	Spring Electrical
Stage Manager	Tracey Gillard
Stage Hands	***
Box Office	Neil Edwards



Committee

Chair person	Sara Brammall
Vice Chairperson	Alison Kiddell
Secretary	Cara Turner
Treasurer	Neil Edwards
Others	Kenny Menet-Hawkins and Denise Hillier

Want to join the fun?

We always welcome new members, no experience required.

There are so many ways you can get involved...

**Acting, singing, dancing, sewing, painting,
back stage, front of house... the list goes on!**

Want to know more? Email us **woodfieldentertainers@yahoo.co.uk**

Or come and talk to us in person today...

We'd love to hear from you!



Coming May 2016...

A good old fashioned
pulsating review show
with songs and laughter

Directed by Neil Edwards

"These Days"

12, 13, and 14 May 2016

Not to be missed!

www.woodfieldentertainers.co.uk

